



NAVIATE®

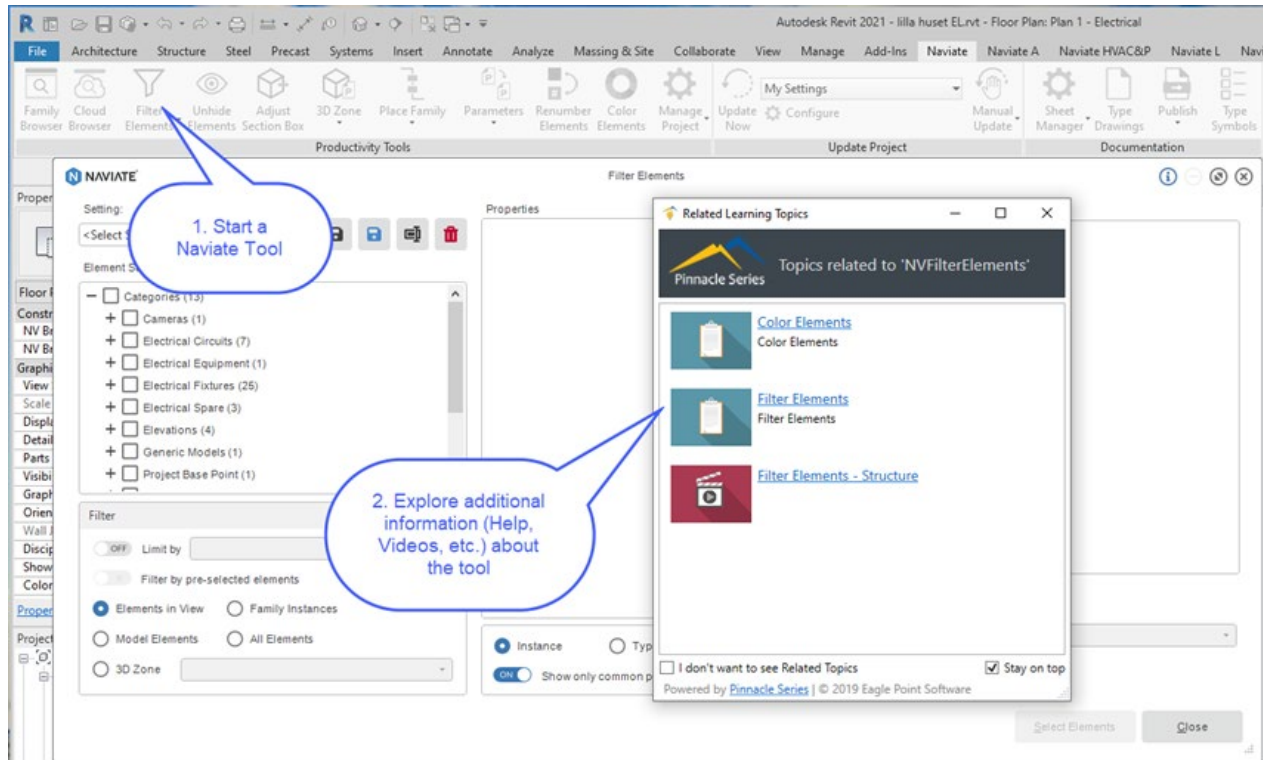
Pinnacle User Tools for Naviate

Naviate for Revit
Version 2.0

Solutions by 
SYMETRI
ADDNODE GROUP

E-learning integration Naviate 2021 and onwards

It is now easy to get more information about each Naviate or Revit tool. As a subscription customer on Naviate you have access to Pinnacle Lite and can access material for Naviate, Autodesk products, Lumion, Enscape, Bluebeam & V-Ray. By using the Pinnacle User tools for Revit you get automatic access to information about the Naviate or Revit tool you use or related tools. [Read more about the integration here.](#)



Getting started with Symetri e-learning:

1. Register and configure users. Information has been sent out to contact person (contract managers) for companies with Naviate Subscription users. [More information here.](#)
2. Login to e-learning portal using your login provided by the administrator of Pinnacle Lite at your company: <https://portal.pinnacleseries.com/#/home> or use the short cut in Naviate Help pull-down
3. Download Pinnacle User Tools (available at Home page on portal)
4. Before installing, please close your Revit application.
5. Activate Pinnacle User tools on your computer from your "User Profile" page in the portal by clicking "Activate on this Device". Sometimes you need to restart your computer to have this option available on your profile.
6. Start Revit/Naviate and click on a tool and start exploring

Download Pinnacle User Tools (available at the Home page in the portal)

The screenshot shows the NAVIATE portal home page. On the left is a navigation menu with categories like 'Symetri training', 'Symetri support', 'Naviate', and 'Asset Libraries'. The main content area includes a search bar, 'TRENDING ASSETS' with a video thumbnail, and 'MY COURSES' which states 'You are not currently enrolled in any Courses.' A callout bubble points to the 'Download Add-ons' button, with the text 'Click to download addin for Revi/Naviate'.

Activate Pinnacle User tools on your computer

The screenshot shows the 'User Profile' page for user 'Symetri'. The profile includes a user picture, name 'Symetri', and email 'Symetri Europe E-Learning'. There is a checked box for 'Send notifications via email' and links for 'Change User Name', 'Change Profile Picture', and 'Change Password'. Below this, it shows 'Member of 0 Work Groups', 'Enrolled in 6 Courses', and 'Has completed 1 Courses'. A language dropdown is set to 'English'. At the bottom, there are two buttons: 'Activate on this Device' (highlighted with a blue border) and 'Deactivate on this Device'.